

# Gaza Strip - Conflict Related Casualties

## Between 30 March – 16 July 2018

### Caseload of casualties related to the conflict

16,496 Injured      148 Killed

#### Injuries treating by facility

8,695 Treated at hospitals      7,801 Treated & discharged at TSPs\*

#### Hospitalized Injuries by gender

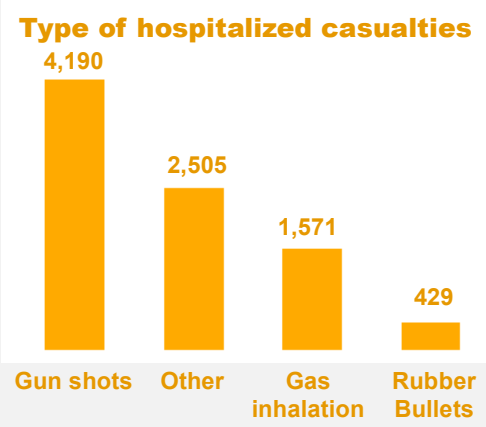
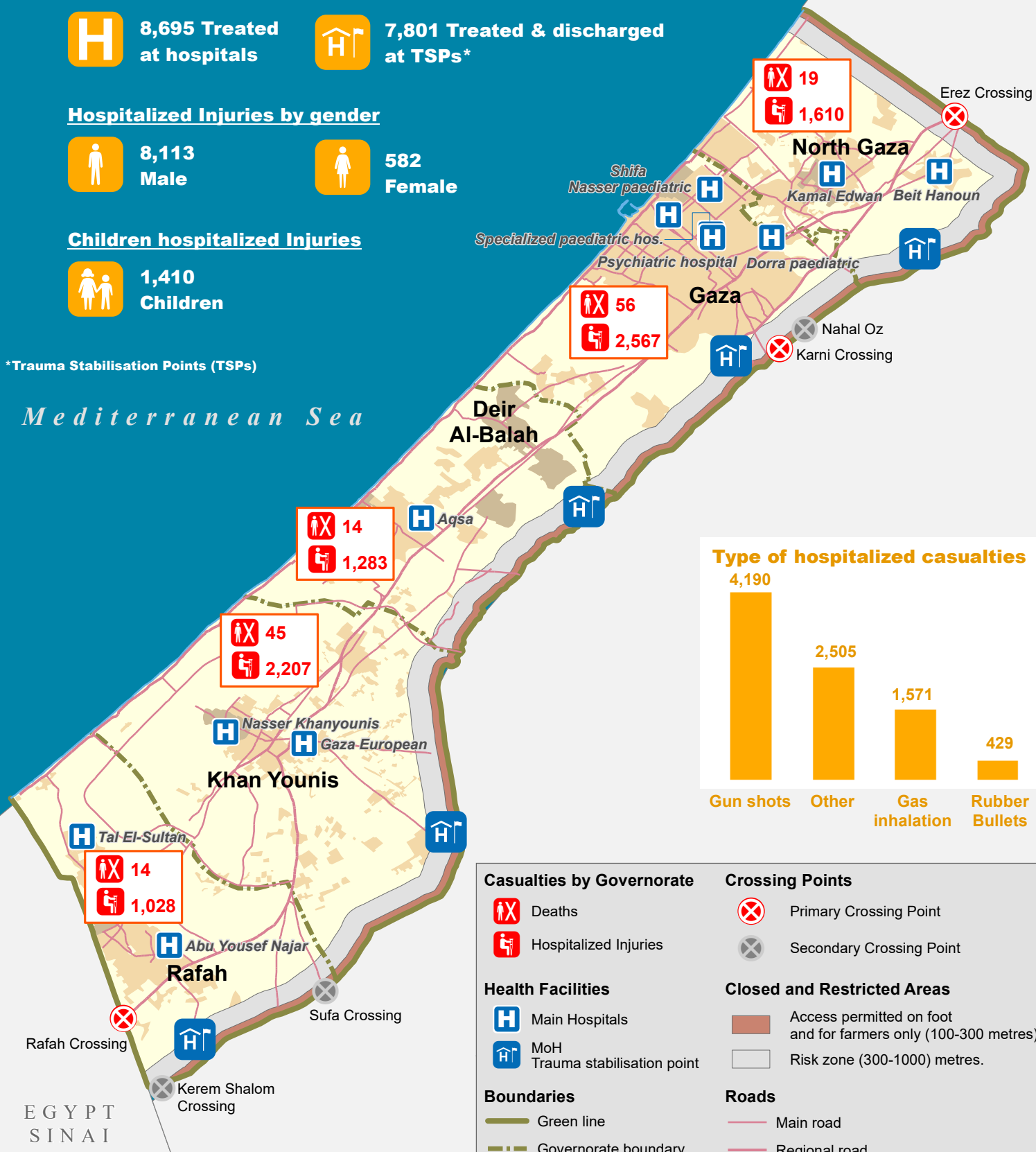
8,113 Male      582 Female

#### Children hospitalized Injuries

1,410 Children

\*Trauma Stabilisation Points (TSPs)

Mediterranean Sea



<h4>Casualties by Governorate</h4> <ul style="list-style-type: none"> <li> Deaths</li> <li> Hospitalized Injuries</li> </ul>	<h4>Crossing Points</h4> <ul style="list-style-type: none"> <li> Primary Crossing Point</li> <li> Secondary Crossing Point</li> </ul>
<h4>Health Facilities</h4> <ul style="list-style-type: none"> <li> Main Hospitals</li> <li> MoH Trauma stabilisation point</li> </ul>	<h4>Closed and Restricted Areas</h4> <ul style="list-style-type: none"> <li> Access permitted on foot and for farmers only (100-300 metres)</li> <li> Risk zone (300-1000) metres.</li> </ul>
<h4>Boundaries</h4> <ul style="list-style-type: none"> <li> Green line</li> <li> Governorate boundary</li> <li> Built-up Area</li> <li> Refugee camp</li> <li> Coast line</li> </ul>	<h4>Roads</h4> <ul style="list-style-type: none"> <li> Main road</li> <li> Regional road</li> </ul>

Data source: MoH  
Baseline source: OCHA oPt

The boundaries and names shown and the designations used on this map do not imply official endorsement or acceptance by the United Nations.