

### occupied Palestinian territory

**Emergency Type:** Complex  
**Reporting Period:** 1 April – 30 June 2022

#### Health Cluster people in need and target

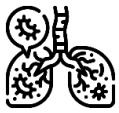
<b>1.5 M</b>	Need Assistance
<b>1.2 M</b>	Targeted
<b>42</b>	Active Cluster Members

#### HIGHLIGHTS

- In the second quarter there were a total of 12,650 new confirmed cases bringing the total number of confirmed cases since the beginning of the pandemic to 659,853.
- Two million people have been vaccinated against COVID-19.
- Partners supported the capacity building of 1,600 health workers on various health issues.
- 19,000 people in Area C benefitted from mobile clinic services.
- A total of 6,600 patients benefitted from limb reconstruction, elective surgery, and rehabilitation services.
- Around 51,000 people benefitted from mental health psychosocial support (MHPSS) services.
- Medical supplies enough to cover 166,000 people with various medical needs were provided by partners.

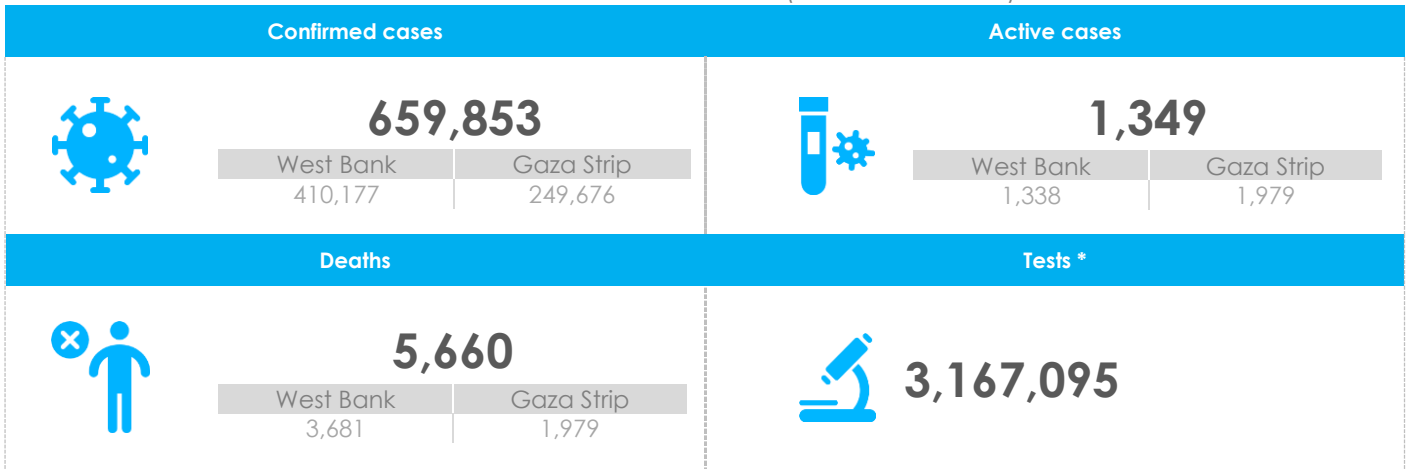


Limb reconstruction surgery in Gaza - Photo: QRCS

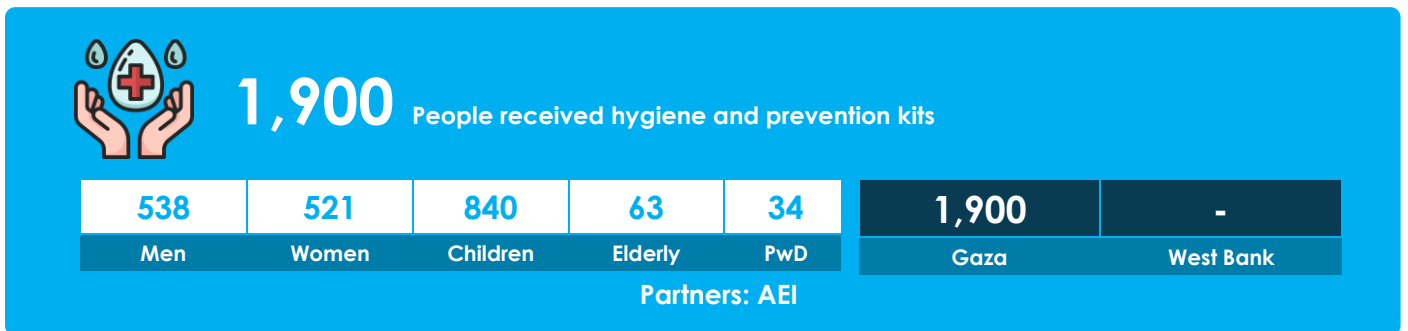
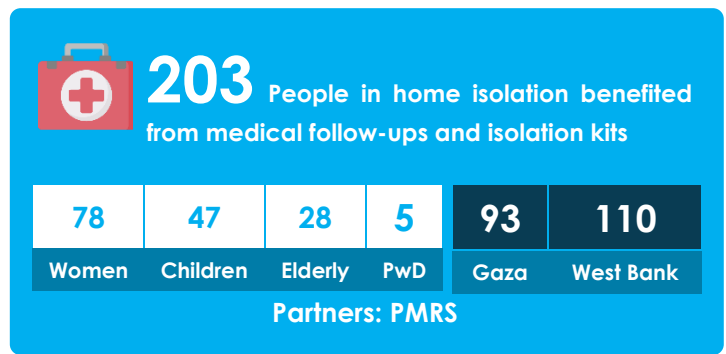


# Communicable Diseases

**COVID-19 SITUATION IN NUMBERS** (As of 30 June 2022)



\*The number of tests does not include East Jerusalem



# Risk Communication and Community Engagement





## Trauma and Emergency Care



**718** Patients supported with limb reconstruction

<b>380</b>	<b>169</b>	<b>169</b>	<b>21</b>	<b>89</b>	<b>718</b>	<b>-</b>
Men	Women	Children	Elderly	PwD	Gaza	West Bank

Partners: NSR, PRCS, MAP, PCRF, QRCS, WHO



**5,922** Patients supported with elective surgery

<b>1,896</b>	<b>3,664</b>	<b>362</b>	<b>4</b>	<b>-</b>	<b>5,652</b>	<b>270</b>
Men	Women	Children	Elderly	PwD	Gaza	West Bank

Partners: QRCS, PCRF, PRCS, Kuwait Specialized Hospital, UNRWA



**28,948** People benefited from medical supplies provided

<b>27,552</b>	<b>1,396</b>
Gaza	West Bank

Partners: NRC, WHO, PRCS, PMRS



**490** Health care staff trained on essential life-saving interventions

<b>490</b>	<b>-</b>
Gaza	West Bank

Partners: MDM – France, PCRF, WHO, PRCS



Mass Casualty Management Training conducted by WHO in West Bank and Gaza - Photo: WHO



## Non-communicable Diseases



**108,981**

Patients suffering from chronic diseases received treatment and consultations

Patients suffering from chronic diseases received treatment and consultations

64,399	1,538	860	1,126	106,807	2,174
Women	Children	Elderly	PwD	Gaza	West Bank

Partners: AVH/LWF, PMRS, Awda Association, UNRWA



**113,636**

People benefited medical supplies provided

112,240	1,396
Gaza	West Bank

Partners: AEI, PMRS, Awda Association, MDM France, PCRF, PMRS, UNRWA



**376**

Health care workers trained on NCD management

376	-
Gaza	West Bank

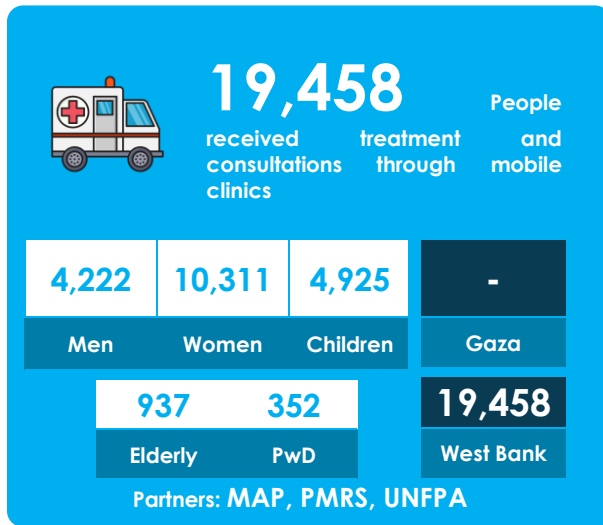
Partners: MAP, WHO



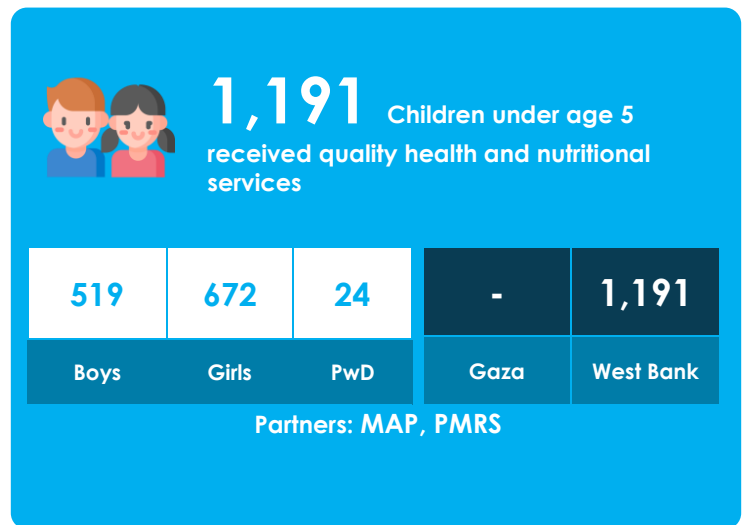
Providing foot screening for a diabetic patient in Kharbatha Bani Hareth – Ramallah – Photo: AVH/LWF



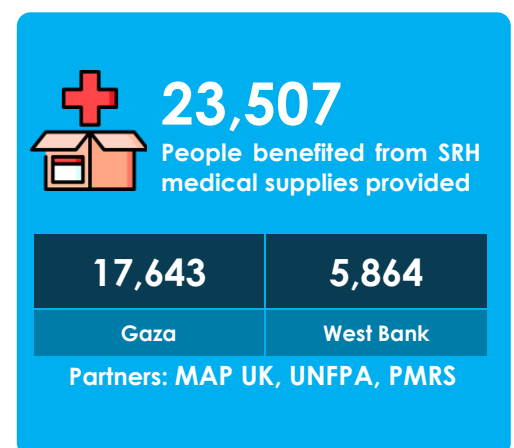
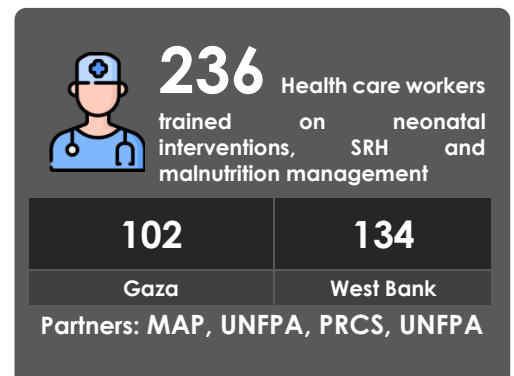
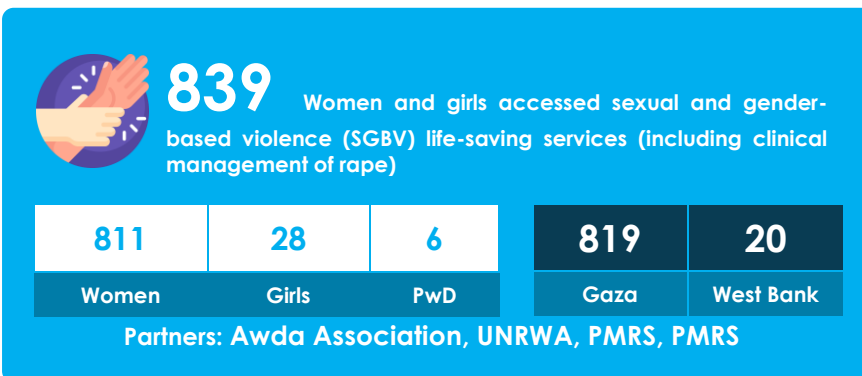
## Mobile Clinics



## Mother and Child Health and Nutrition



## Sexual and Reproductive Health & Gender-Based Violence





## Mental Health and Psychosocial Support



**479** Health care providers and community workers trained on MHPSS, including mhGAP

<b>439</b>	<b>40</b>
Gaza	West Bank

Partners: RED NOSES International, Mdm France, PCRF WHO



**51,134** People received mental health and psychosocial support services

<b>8,065</b>	<b>31,606</b>	<b>11,463</b>
Men	Women	Children

<b>589</b>	<b>629</b>
Elderly	PwD

<b>33,506</b>	<b>17,628</b>
Gaza	West Bank

Partners: Mdm France, UNRWA, Mdm Suisse, Mdm Spain, Awda Association, PCRF, PMRS, RED NOSES International



A clown visits at the pediatric ward in Rafidia Governmental Hospital. Photo: RED NOSES International



## Disability and Rehabilitation

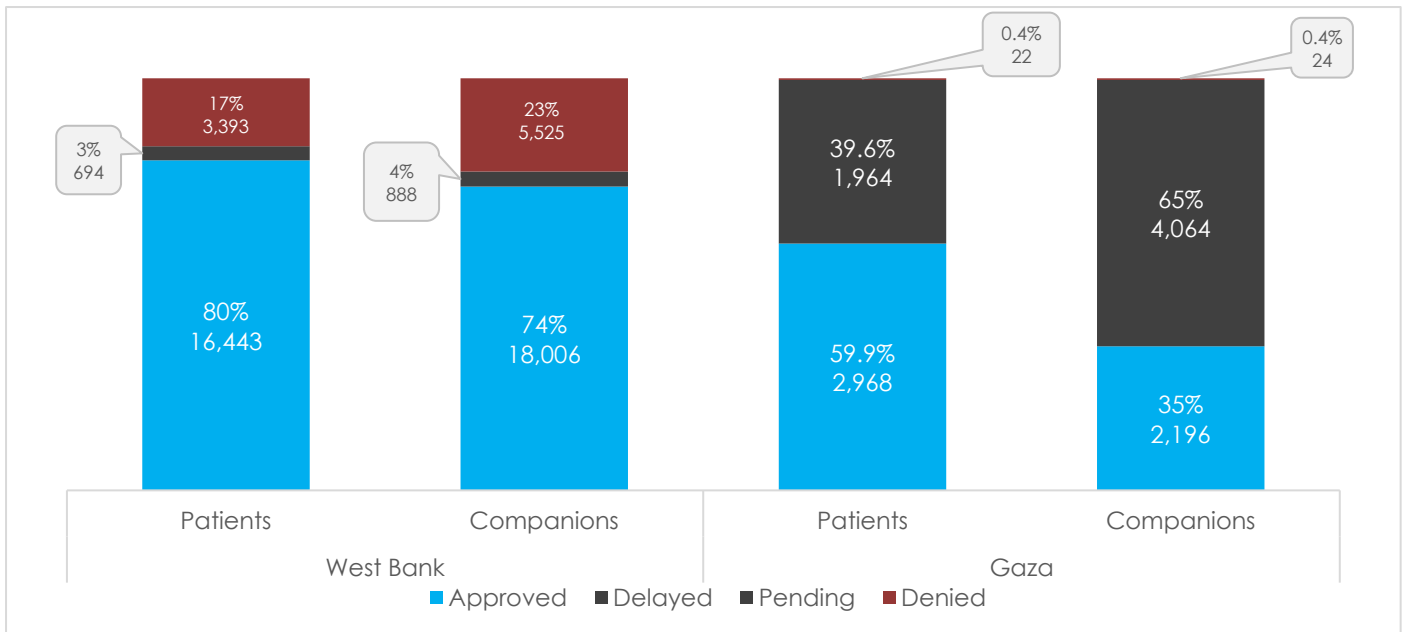
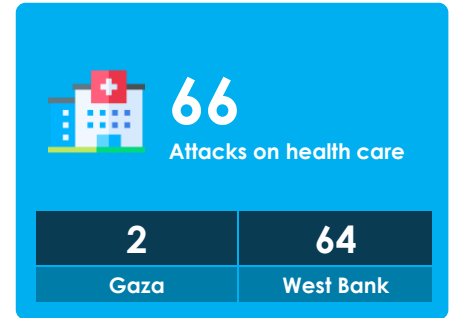
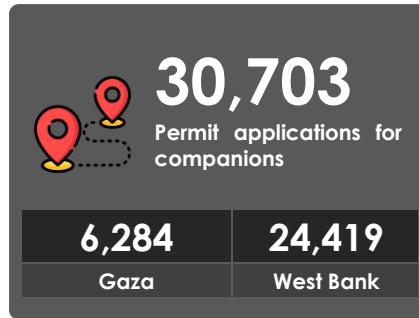
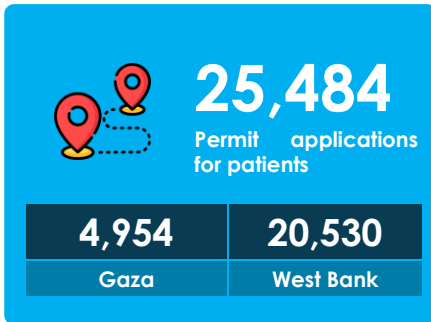


**1,749** Patients provided with multi-disciplinary rehabilitation services

<b>1,263</b>	<b>256</b>	<b>230</b>	<b>38</b>	<b>88</b>	<b>413</b>	<b>1,336</b>
Men	Women	Children	Elderly	PwD	Gaza	West Bank

Partners: NSR, MAP, PCRF, PMRS, WHO

# Health access and attacks on healthcare



There were a total of 66 health attacks recorded and verified by WHO across oPt in the second quarter.

### West Bank including East Jerusalem

**64 attacks** of these **53** were recorded in East Jerusalem whilst **11** were recorded in West Bank locations outside of East Jerusalem. The attacks involved:

- 58 incidents with physical violence
- 10 incidents with obstruction of health care delivery
- 12 ambulance vehicles whose access was obstructed
- 5 health care workers whose access was obstructed
- 6 ambulance vehicles which were damaged
- 55 health workers who were injured
- 2 incursions into health facilities

### Gaza Strip

**2 health attacks** in Gaza affecting **2** hospitals.

Read more in WHO's monthly Health Access reports:  
<http://www.emro.who.int/pse/publications-who/monthly-referral-reports.html>

### Key priorities for the third quarter

Health projects in the 2022 Humanitarian Response Plan are only at 19% funded. Below are some key needs:

- Expand mobile clinics service provision to locations that could not be reached due to lack of funding as some funds have been secured to cover the remainder of the year.
- Continue scaling up trauma and emergency response focusing on prepositioning and capacity building especially in West Bank including East Jerusalem.
- Intensify mobilization of funding for the humanitarian response: an exhibition showcasing partners' activities is planned.
- With technical expertise from cash in health programming, identify activities in health for incorporation cash and voucher-based assistance.
- Identify Health Cluster humanitarian needs for 2023 and develop response plan.

## Assessments

### **PMRS COVID-19 Services Evaluation, PMRS (Ongoing)**

The assessment was carried out to identify the impact of COVID-19 on PMRS service delivery and lessons learnt.

### **Assessment of the emergency preparedness of Level 4 PHCs in the Gaza, MdM-France (Ongoing)**

Assess the readiness of the emergency department in the Level 4 PHCs to receive emergency cases and manage services during emergency periods.

### **Primary health care service assessment including mobile clinic in the West Bank, MdM-France (Ongoing)**

Assess the status of primary health care services including mobile clinics in the West Bank and determine the services that need support and capacity building.

### **Assessment of pre-hospital care in Gaza, PRCs (Completed)**

Statistical review of emergency medical services beneficiaries from 01/04/2022 to 30/06/2022.

### **Assessment of healthcare clowning and capacity needs in West Bank, HI and RED NOSES International (Ongoing)**

Assess the impact of healthcare clowning on patients and guardians as well as capacity building needs for healthcare clowns and healthcare workers.

### **WASH in health care facilities technical assessment in Gaza, WW-GVC (Ongoing)**

Technical assessment of WASH in health care facilities in the North governorate.

### **Stigma and obstacles to access to mental health services for children and adolescents in Gaza, MdM-Spain (Completed)**

The study analyzed the links between mental health problems, exposure to violence of children and adolescents in Gaza, and stigma of mental health problems.



This bulletin was made with contributions from the following partners:



جمعية أرض الإنسان  
ARD EL INSAN - PALESTINE 1984



العودة  
Awda  
Health and Community Development 1985



humanity  
& inclusion



MEDICAL AID FOR PALESTINIANS



The National Society for Rehabilitation



Palestine Children's Relief Fund  
جمعية إغاثة أطفال فلسطين



الهلال الأحمر القطري  
Qatar Red Crescent



state of Palestine office



Augusta Victoria Hospital  
مستشفى الأوغستا فكتوريا - المظلع



THE LUTHERAN  
WORLD  
FEDERATION



**HEALTH CLUSTER**  
OCCUPIED PALESTINIAN TERRITORY

Ms. Chipo Takawira  
Health Cluster Coordinator  
ctakawira@who.int

Dr. Abdelnaser Soboh  
Gaza Sub-National Health Cluster  
soboha@who.int